

DRC

PZ25-12000014

08/20/2025



BRANCH OUT CONSULTING

2635 SE 10th Street, Pompano Beach FL 33062

Kirstie@branchoutconsultingllc.com

(954)-621-6324

TO Evergreen Design Group
1340 Environ Way
Chapel Hill, NC 27517

Mary Bates
mary@evergreendesigngroup.com
o: 800.680.6630 x8
c: 407.963.6864

RE: ISA Certified Arborist Report
115 NW 16 ST Pompano
Beach, FL 33060

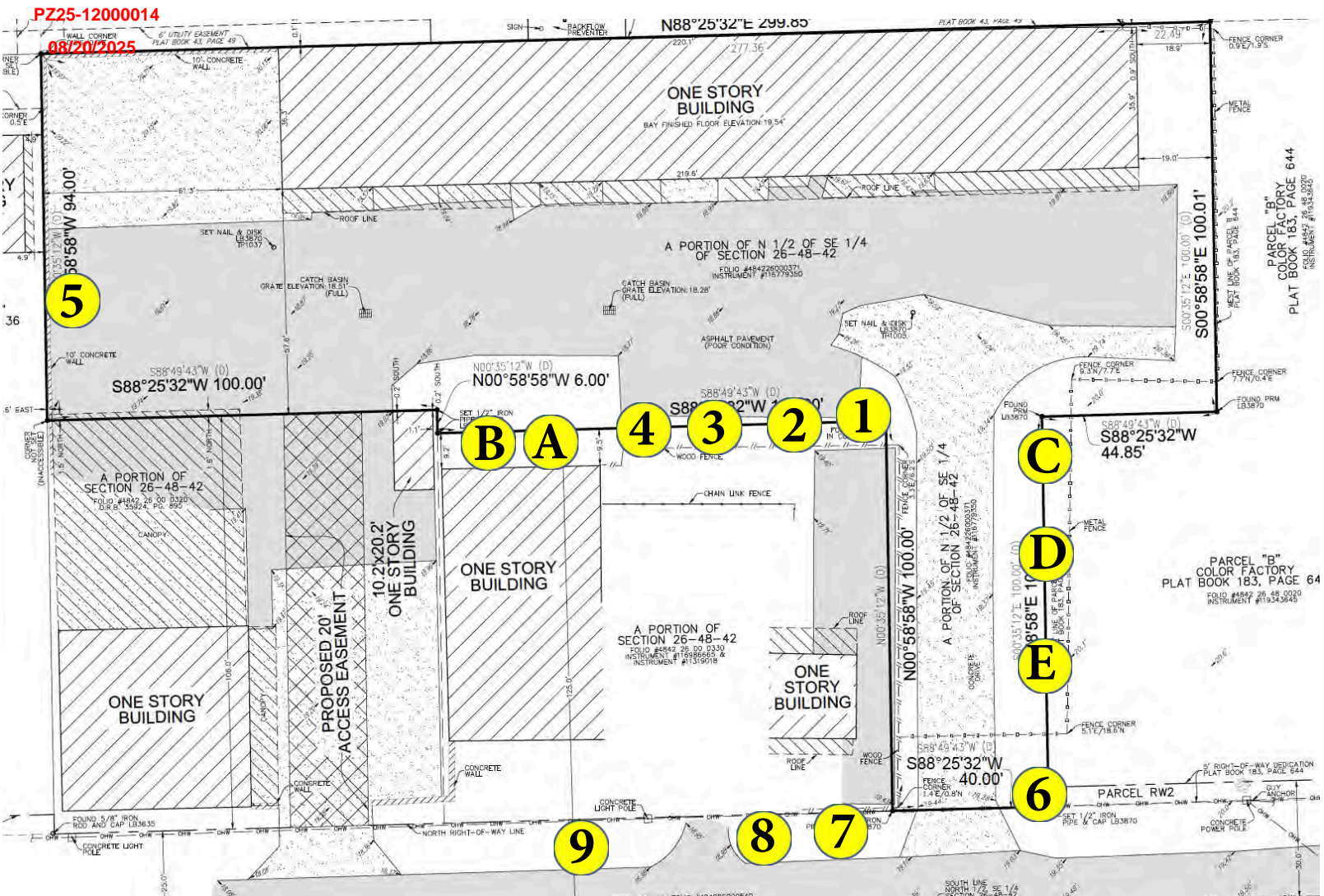
This document is an evaluation of the location, size, and condition of all trees onsite and within the right-of-way at 115 NW 16 ST on April 9, 2025. All observations are visual from the ground. Tree locations were mapped as an overlay on existing survey. Existing property survey was cropped to depict tree locations and is not to scale. Palms are single trunk unless otherwise noted. DBH was measured as a sum of all codominant branches at breast height were applicable. Offsite tree measurements were visually estimated. This report is not a risk assessment. This report may be utilized for permitting purposes. Tree dispositions determined by others.

Thank you for the opportunity to help resolve your tree issues.

ISA Certified Arborist FL-9601A

Tree Risk Assessment Qualified (TRAQ)

ASCA Professional Member



DRC

Tree Matrix

PZ25-12000014

08/20/2025

Tree #	Common Name	Botanical Name	DBH (in)	Condition (%)	Height (ft)	Width (ft)	Canopy Coverage (%)	Appraisal Dollar Value	Notes	Disposition
1	Silver Buttonwood	<i>Conocarpus erectus</i>	4	70%	10	8	50	\$1,050.00	Severely limited root zone (LRZ). Trunk flair buried. Over-extended branches. Otherwise good health and	PROTECT
2	Silver Buttonwood	<i>Conocarpus erectus</i>	3.5	70%	10	9	64	\$919.00	LRZ. Mechanical trunk damage.	PROTECT
3	Silver Buttonwood	<i>Conocarpus erectus</i>	4	60%	10	9	64	\$900.00	LRZ. Tip dieback. Poor structure, leaning.	PROTECT
4	Silver Buttonwood	<i>Conocarpus erectus</i>	4	65%	11	12	113	\$975.00	LRZ. Circling/plunging roots.	PROTECT
5	Strangler Fig	<i>Ficus aurea</i>	10	40%	12	10	79	\$1,250.00	Volunteer. Severely limited root zone. Insect damage throughout most canopy foliage. DBH taken as sum of all 3	REMOVE
6	Live Oak	<i>Quercus virginiana</i>	33	75%	30	40	1257	\$13,922.00	Overhead wire conflict- utility pruned. Tip dieback 1-2" in diameter throughout canopy. Otherwise good health and	PROTECT
7	Silver Buttonwood	<i>Conocarpus erectus</i>	3.5	60%	10	10	79	\$788.00	Trunk girdled by wellington tape in lower half. Circling roots.	PROTECT
8	Silver Buttonwood	<i>Conocarpus erectus</i>	6.5	90%	14	12	113	\$2,194.00	Excellent.	PROTECT
9	Silver Buttonwood	<i>Conocarpus erectus</i>	4.5	60%	11	10	79	\$1,013.00	Tip dieback. Slight trunk lean.	PROTECT
A	Silver Buttonwood	<i>Conocarpus erectus</i>	N/A	N/A	10	16	201	N/A	OFFSITE.	PROTECT
B	Silver Buttonwood	<i>Conocarpus erectus</i>	N/A	N/A	10	8	50	N/A	OFFSITE.	PROTECT
C	Silver Buttonwood	<i>Conocarpus erectus</i>	2	55%	9	7	38	N/A	OFFSITE.	PROTECT
D	Foxtail Palm	<i>Wodyetia bifurcata</i>		30%	10	5	20	N/A	OFFSITE.	PROTECT
E	Silver Buttonwood	<i>Conocarpus erectus</i>	2	60%	8	12	113	N/A	OFFSITE.	PROTECT

14.40 Appraisal Worksheet

DRC

PZ25-12000014

08/20/2025

Tree #	Common Name	Botanical Name	DBH inches (Trees)/OH	Replacement Tree Caliper (inches)	Wholesale Cost	Cost Installed	\$ Per Diameter Inch	Value Removed	Diminutive Factor (Condition %)	Final Appraised Value
1	Silver Buttonwood	<i>Conocarpus erectus</i>	4	2	\$300.00	\$750.00	\$375.00	\$1,500.00	70%	\$1,050.00
2	Silver Buttonwood	<i>Conocarpus erectus</i>	3.5	2	\$300.00	\$750.00	\$375.00	\$1,313.00	70%	\$919.00
3	Silver Buttonwood	<i>Conocarpus erectus</i>	4	2	\$300.00	\$750.00	\$375.00	\$1,500.00	60%	\$900.00
4	Silver Buttonwood	<i>Conocarpus erectus</i>	4	2	\$300.00	\$750.00	\$375.00	\$1,500.00	65%	\$975.00
5	Strangler Fig	<i>Ficus aurea</i>	10	2	\$250.00	\$625.00	\$312.50	\$3,125.00	40%	\$1,250.00
6	Live Oak	<i>Quercus virginiana</i>	33	6	\$1,350.00	\$3,375.00	\$562.50	\$18,562.50	75%	\$13,922.00
7	Silver Buttonwood	<i>Conocarpus erectus</i>	3.5	2	\$300.00	\$750.00	\$375.00	\$1,313.00	60%	\$788.00
8	Silver Buttonwood	<i>Conocarpus erectus</i>	6.5	2	\$300.00	\$750.00	\$375.00	\$2,437.50	90%	\$2,194.00
9	Silver Buttonwood	<i>Conocarpus erectus</i>	4.5	2	\$300.00	\$750.00	\$375.00	\$1,687.50	60%	\$1,013.00

DRC

PZ25-12000014

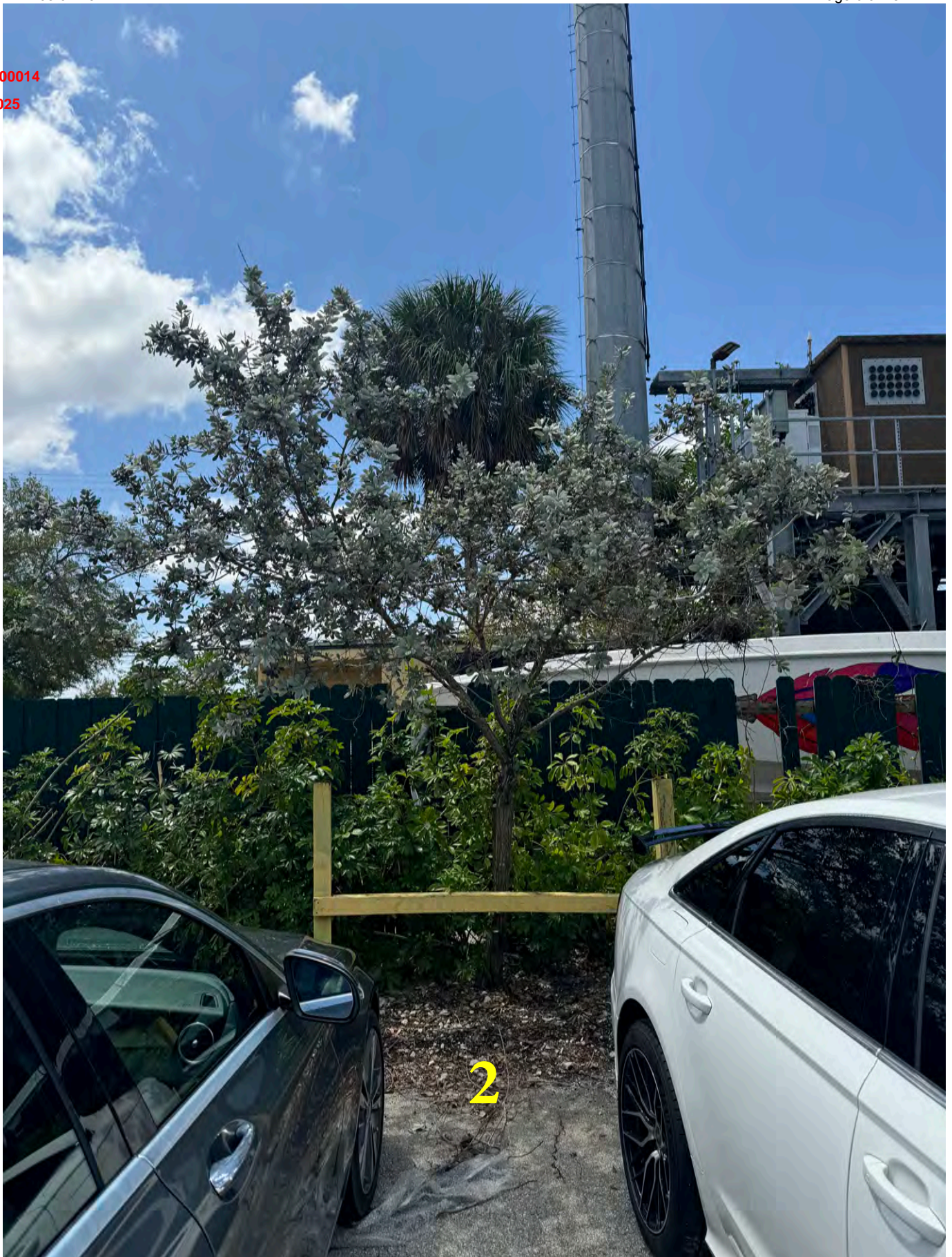
08/20/2025



DRC

PZ25-12000014

08/20/2025



DRC

PZ25-12000014

08/20/2025



DRC

PZ25-12000014

08/20/2025



DRC

PZ25-12000014

08/20/2025

5



DRC

PZ25-12000014

08/20/2025



6

DRC

PZ25-12000014

08/20/2025



DRC

PZ25-12000014

08/20/2025



DRC

PZ25-12000014

08/20/2025



DRC

PZ25-12000014

08/20/2025



DRC

PZ25-12000014

08/20/2025



DRC

PZ25-12000014

08/20/2025



DRC

PZ25-12000014

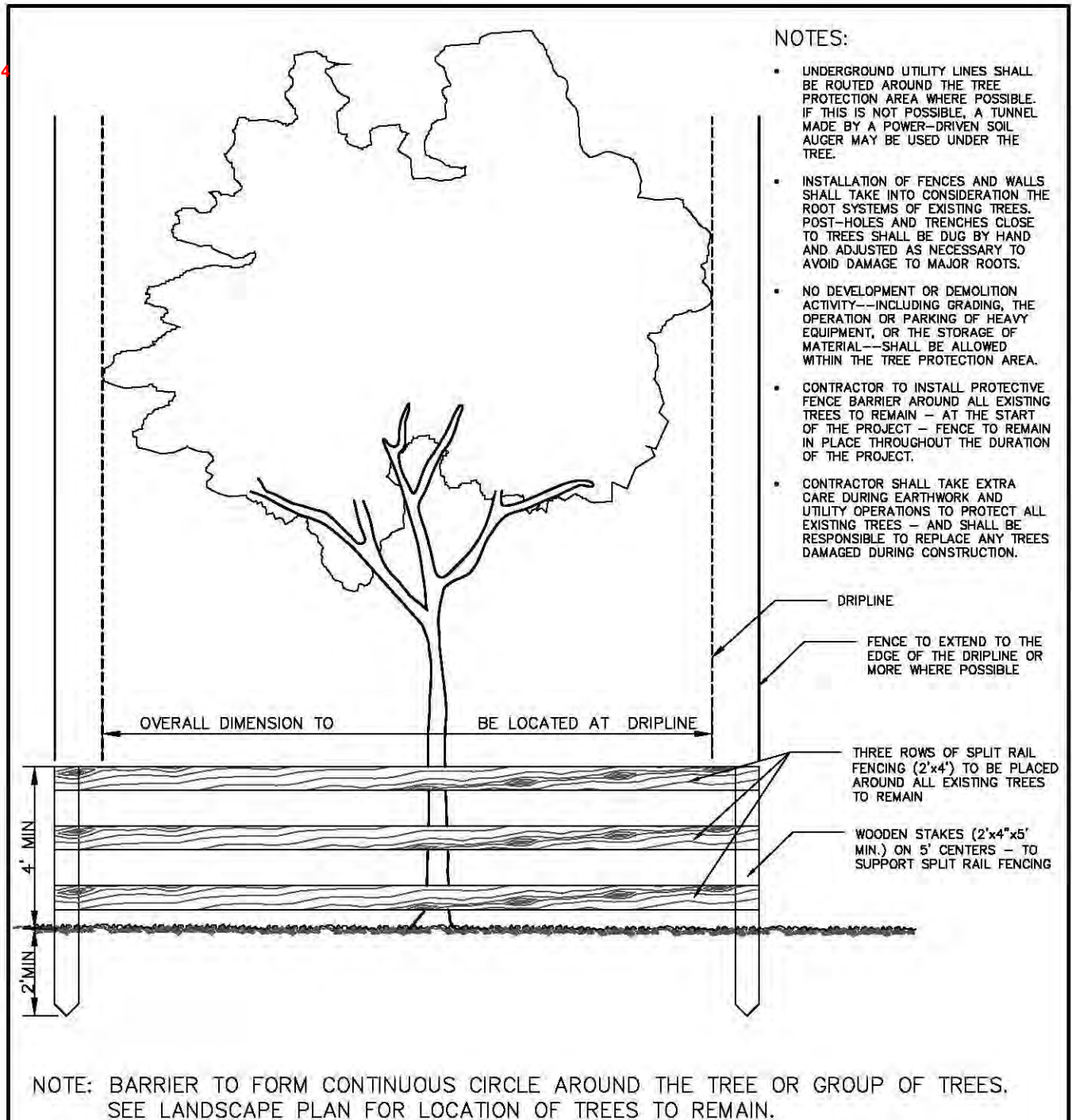
08/20/2025



DRC

PZ25-12000014

08/20/2025



TREE PROTECTION DETAIL

LANDSCAPE STANDARDS

REVISIONS		URBAN FORESTRY CITY OF POMPANO BEACH	TREE PROTECTION DETAIL	
BY	DATE		APPROVED BY: URBAN FORESTER	DATE: SEP 2021 DWG. NO. 104-1
TCW	04/2010			
AS	09/2021			
		SCALE: N.T.S.		